

# TUBBESING

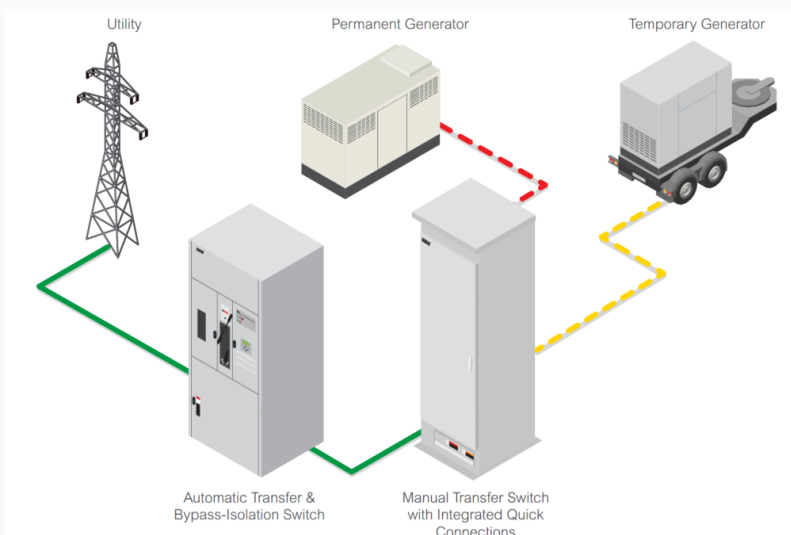
Official Newsletter to Improve Your Critical Facility

## ASCO 300 Series Transfer Switch

BY MICHAEL JOHNSON

Snow and ice on the ground is very unusual for Texas. I hope you all stayed warm and safe during the icy weather last week. Power failures are common and especially so during cold, snow and unpredictable weather events. Staying online is critical to keeping businesses running, families safe and people online.

ASCO Power Technologies plays a big role in emergency power backup systems that can help keep you protected 24 hours a day, seven days a week. The Series 300 line of transfer switches offers a large portfolio of products to integrate in back up power. These include Automatic Transfer Switches, Manual Transfer Switches and Quick Connect Panels.



## This issue:

**ASCO** Power Technologies™

Educational Article

PAGE 1-4

Upcoming Events

PAGE 5

Line Sheet & One line

PAGE 6

Services

PAGE 7



## Article Cont.

ASCO has a wide variety of products in the emergency power system. Often these systems are comprised of an emergency generator and a transfer switch, automatic or manual. The automatic transfer switch allows one to operate on normal utility power and in the event of a power failure, the transfer switch will start the generator then transfer the connected load to the alternate power source. Upon return of normal utility power, the transfer switch will automatically transfer to normal power and turn off the generator. These units are especially helpful because they don't require any manpower to operate. The ASCO Series 300 is especially popular in the light industrial, commercial/retail, and municipal markets because of their intuitive controller technology, small footprint, and globally award-winning performance. The maximum reliability and excellent value offer tremendous benefits to a cost-friendly product.



Fig. 3: ASCO Power Transfer Switch rated 600 Amps

**"The automatic transfer switch allows one to operate on normal utility power and in the event of a power failure, the transfer switch will start the generator then transfer the connected load to the alternate power source".**



## Article Cont.

Manual transfer switches (MTS) are a very popular choice when a permanent generator doesn't make sense due to cost constraints or physical space limitations. An MTS works to provide permanent means to quickly connect temporary power, such as a roll up or temporary generator. These switches are built to the same UL1008 standard as automatic transfer switches and have a wide variety of applications. Available from 150A to 3000A and up to 600V, these units can be used in almost any environment. Indoor, outdoor or stainless-steel enclosures can be utilized to install in whatever space is available. The MTS can be used in a service entrance configuration and it provides a center off, 3 position switching operation to ensure that two sources cannot be simultaneously connected.

Following the MTS, ASCO offers use of cam locks for quick connection of temporary power. Cam locks are utilized on manual transfer switches or can be a standalone panel for emergency uses. Standard Type 3R weatherproof construction allows these panels to be placed outdoors for quick access to portable power. The 16 series cam locks are an industry standard in quick power connections making these universal to use with emergency equipment. These QCP (Quick Connect Panels) are available from 400A to 4000A, are listed to UL 1008 and provide compliance to the new 2017 NEC section 700.3 requirements for a temporary source of power for maintenance or repair of the alternate source.

**"An MTS works to provide permanent means to quickly connect temporary power, such as a roll up or temporary generator."**



## Article Cont.



The ASCO Series 300 Automatic Transfer Switch (ATS) is a reliable, consistent, and valuable product to integrate into an emergency power system. You can be assured with any transfer switch or QCP, your facility is protected by a solution that will reliably supply power in power failure events or maintenance work. It is important to think about failure events ahead of time to be prepared in keeping facilities online. Please let us know if you would like to learn more about these products. Our goal is to provide the best solution for your specific needs and we are here to help the customer first and foremost.

Contact us @ [800.846.6516](tel:800.846.6516) or [info@tubbesing.com](mailto:info@tubbesing.com). If you wish to speak to Michael directly, please email him at [michael@tubbesing.com](mailto:michael@tubbesing.com).

**ASCO** Power Technologies™

"You can be assured with any transfer switch or QCP, your facility is protected by a solution that will reliably supply power in power failure events or maintenance work."



# TUBBESING

IMPROVING CRITICAL FACILITIES

## Upcoming Events:

- March 30 @ 11:00 am - 6:00 pm  
Tubbesing Open House – Celebrating 40 years  
TUBBESING, 2020 diplomat drive Apt 100, Dallas, TX
- April 26 @ 11:30 am - 1:30 pm  
ASCO Lunch and Learn  
TUBBESING, 2020 diplomat drive Apt 100, Dallas, TX
- May 24 @ 3:00 pm - 5:00 pm  
Dallas Happy Hour  
TUBBESING, 2020 diplomat drive Apt 100, Dallas, TX



## ABOUT MICHAEL

SALES - DALLAS

MICHAEL JOHNSON GRADUATED FROM TCU IN 2018 WITH A B.S. IN ENGINEERING WITH AN EMPHASIS IN MECHANICAL ENGINEERING. HE JOINED THE DALLAS TEAM IN 2019 AS AN INSIDE SALES ENGINEER. NEBRASKA BORN, MICHAEL ENJOYS SKIING, GOLFING, AND TRAVELING.

[MICHAEL@TUBBESING.COM](mailto:MICHAEL@TUBBESING.COM)





APC (American Power Conversion) • [www.apc.com](http://www.apc.com) • 1-Phase & 3- Phase UPS Systems from 200VA – 3,000kVA; Modular • Precision In-Row Air Conditioning Systems • Rack & Enclosure Systems; Rack- Mounted PDU • Integrated Power/Rack/Air Solutions



ASCO Power Systems • [www.ascopower.com](http://www.ascopower.com) • Automatic & Manual Transfer Switches • (208V – 25kV) • Generator Control Switchgear (208V thru 25kV) • Open & Closed Transition Systems • Load Banks



ATOM Power • [www.atompower.com](http://www.atompower.com) • Solid-State Circuit Breaker • E.V. Charging • Smart Power Distribution • Intelligent Software • User Friendly System • ATOM Switch • ATOM Panel • ATOM OS • Commercial and Industrial Applications



Bender Inc. • [www.benderinc.com](http://www.benderinc.com) • World leader in Medical Division Equipment • Line Isolation Monitors (LIMs) Systems • Isolated Power Panels • Bringing Innovations such as Branch Circuit Fault Location and Load Monitoring to Critical Healthcare Facilities



Current Technology by ABB • [www.electrification.us.abb.com](http://www.electrification.us.abb.com) • Transient Voltage Surge Suppressors • Electronic Grade Panelboards • Industrial Grade Power Protection Systems



DSPM • [www.dspmanufacturing.com](http://www.dspmanufacturing.com) • Emergency Lighting Inverters; Single Phase from 350W - 18kW • Three Phase from 3kW - 125kW • Voltage Regulators; Frequency Conditioners



POE LIGHTING • [www.genisyslighting.com](http://www.genisyslighting.com) • Low Voltage • Software Enabled • PoE+ (30W per port) • UPoE (60W per port) • Open IEEE Infrastructure • 32 bit Architecture



PDI by Eaton • [www.eaton.com](http://www.eaton.com) • Power Distribution Units; Remote Power Panels; Static Switches; Branch Circuit Monitoring • Low Voltage Track Busway up to 800A (120V - 600V) Featuring Tap-Off Receptacles/Outlet Boxes • Fused Disconnects; Circuit Breakers; Drop Cords



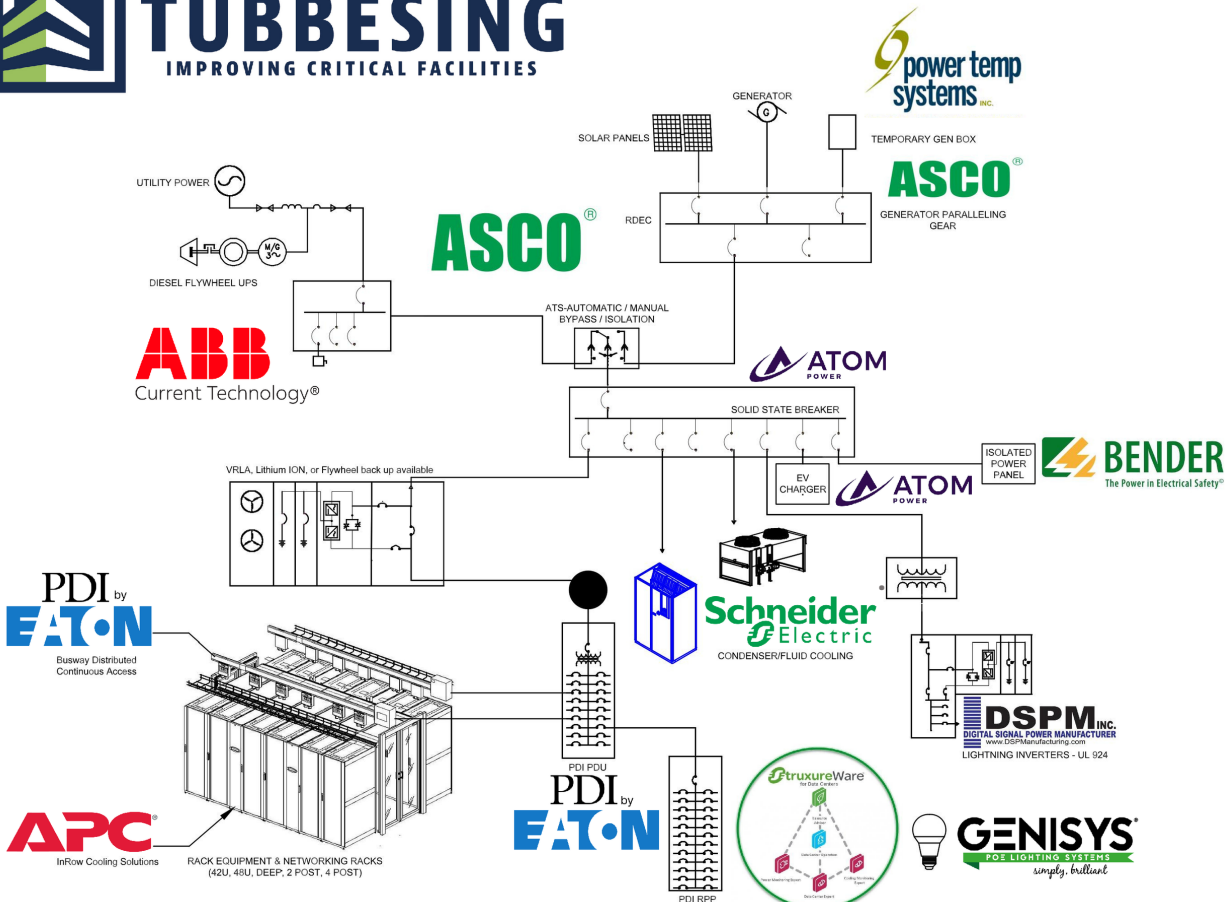
PowerTemp • [www.powertemp.com](http://www.powertemp.com) • Generator Docking Stations • Rental Transfer Switches • Trap Key Interlock, Smart bus, Smart Lugs • Single & Dual breaker options • Load Bank connection boxes



Schneider Electric • [www.se.com](http://www.se.com) • UPS Systems from 10kVA - 1100kVA • Double Conversion Continuous On-line Operation • Computer Room A/C • Upflow/Downflow; Direct Expansion • Chilled Water & Other Cooling Configurations • Facility Power/Cooling Modules



StructureWare • [www.apc.com](http://www.apc.com) • Data Center Infrastructure Monitoring (DCIM); DataCenter Operations, Capacity, Change, & Optimize Software





**TUBBESING**  
IMPROVING CRITICAL FACILITIES

# FREE ASCO ASSESSMENT SERVICES FOR THE MONTH OF FEBRUARY

GIVE US A CALL TO  
COME OUT AND  
EVALUATE YOUR  
ASCO GEAR. LET US  
HELP YOU  
PROACTIVELY  
MAINTAIN YOUR  
ASCO EQUIPMENT!



## CRITICAL EQUIPMENT SERVICE WARRANTY

- UNINTERRUPTIBLE POWER SYSTEMS
- DATA CENTER COOLING
- GENERATORS
- TRANSFER SWITCHES
- POWER DISTRIBUTION UNITS

## FIELD SERVICE

- 1-PHASE & 3-PHASE UPS SYSTEMS
- UPS BATTERY PREVENTATIVE MAINTENANCE
- UPS BATTERY REPLACEMENT
- M.D.F. & I.D.F. CLOSET COOLING
- DIRECT EXPANSION COOLING
- CHILLED WATER COOLING
- C.R.A.C. SYSTEMS
- PRECISION INROW AIR SYSTEMS



## EQUIPMENT MONITORING

- SCHNEIDER DATA CENTER EXPERT SOFTWARE WITH IN-HOUSE 24/7 REMOTE MONITORING & REPORTING CAPABILITIES.
- EQUIPMENT CAPABLE TO MONITOR: UPS, UPS BATTERIES, COOLING, GENERATORS, & ANY ADDITIONAL EQUIPMENT YOU WOULD LIKE TO MONITOR.



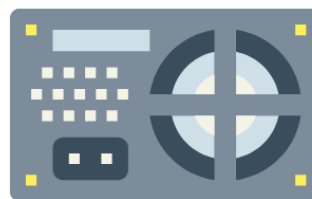
## PROJECT MANAGEMENT

- INITIATING, PLANNING, EXECUTING, AND CLOSING THE OPPORTUNITY WHILE MEETING YOUR GOALS IN THE SPECIFIED TIME FRAME



## PRODUCT SALES

- 1-PHASE & 3-PHASE UPS
- UPS BATTERIES
- DATA CENTER COOLING
- M.D.F. & I.D.F. CLOSET COOLING
- SERVER RACKS
- GENERATORS
- TRANSFER SWITCHES
- SURGE SUPPRESSION



## ADDITIONAL SERVICES

- UPS & COOLING RENTALS
- I.R. SCANS
- LOAD BANKS
- CABLE MANAGEMENT
- DATA CENTER ROOM ASSEMBLY
- DATA CENTER CLEANING

